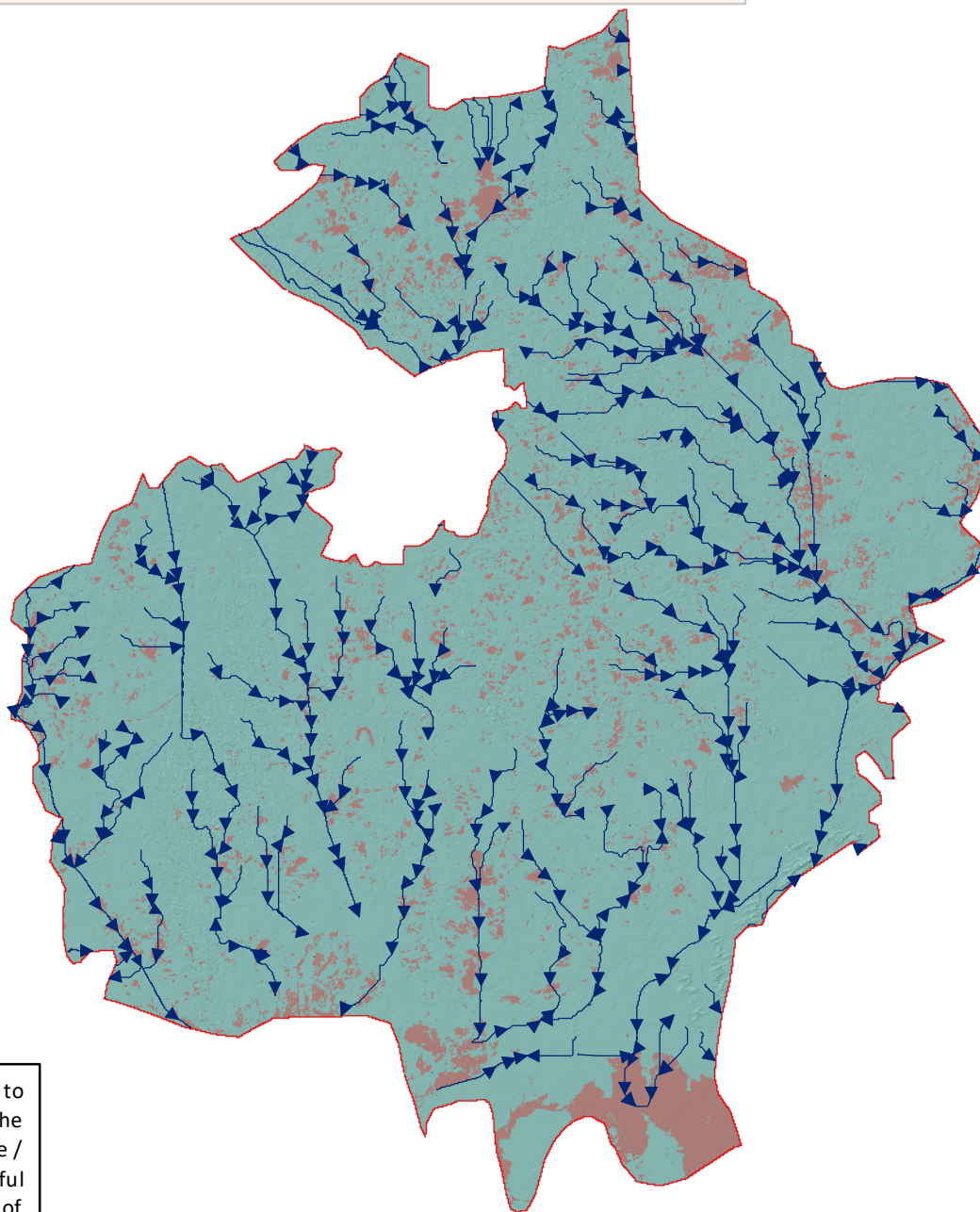
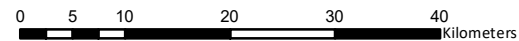


Natural Flow Directions - District Badin



5 m Digital Elevation Model (DEM) has been used to generate surface topography of the district. The same product was used to extract natural drainage / gradients / flow directions. This map can be useful for determining route(s) for safe dewatering of flood water



Legend

- ▶ Flow Directions
- Flood Water Extent
- Elevation (in ft)**
 - 2000 - 2250
 - 1750 - 2000
 - 1500 - 1750
 - 1250 - 1500
 - 1000 - 1250
 - 750 - 1000
 - 500 - 750
 - 250 - 500
 - 0 - 250



Preliminary flood damage assessment carried out using Disaster Management Information System (DMIS)
@ Provincial Emergency Operation Center (PEOC), PDMA Sindh.